



# Hitachi Super Long Front

## Higher, Deeper and Longer – Working for Extra Production



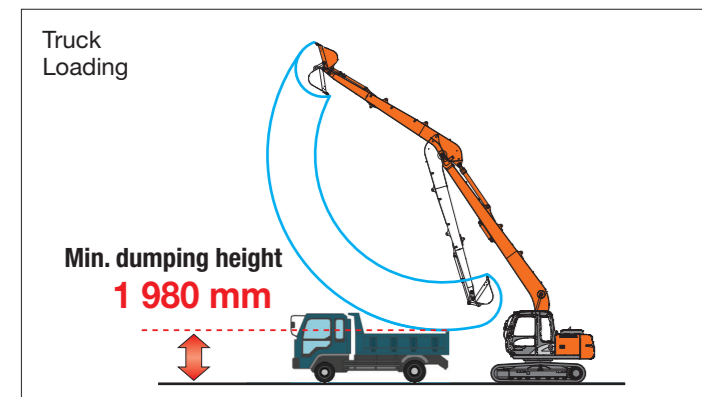
### Longer Reach – Wider Working Ranges

Max. digging reach: **14 270 mm**, up from 8 270 mm\*  
 Max. cutting height: **12 820 mm**, up from 8 570 mm\*  
 Max. digging depth: **11 330 mm**, up from 5 570 mm\*

\* ZX130 with 2.52 ARM

### Easier Truck Loading

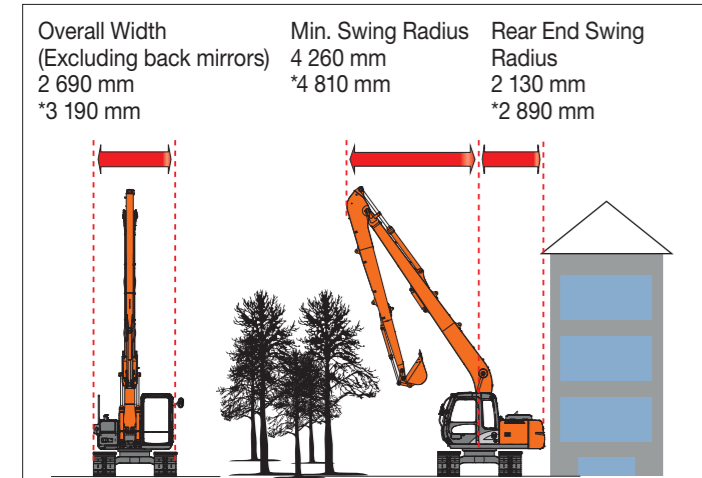
Minimum dumping height **1 980 mm**



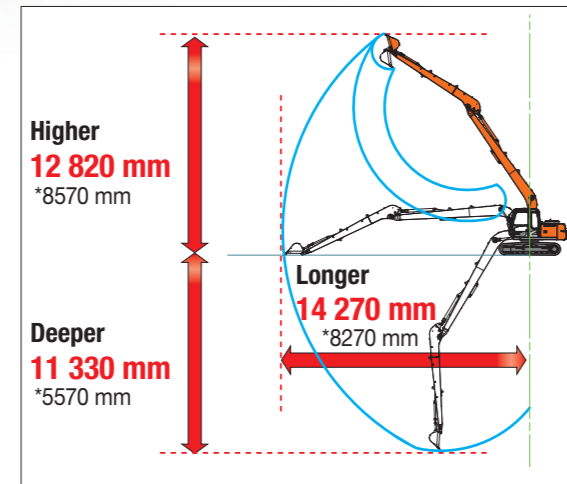
### Big Advantage at Narrow Site

Overall Width (Excluding back mirrors) 2 690 mm short from 3 190 mm\*  
 Rear End Swing Radius 2 130 mm short from 2 890 mm\*  
 Min. Swing Radius 4 260 mm short from 4 810 mm\*

\* ZX210LC-5G SLF (Type 15)



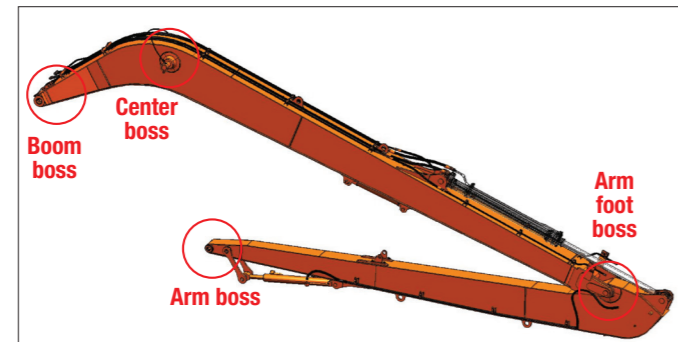
### Working Ranges



\* Indicates ZX130 with 2.52 Arm

### Highly Durable BOOM and ARM

Highly reliable bosses are mounted on BOOM and ARM.



### Enhanced Wear-Resistance Performance



WC (Tungsten-Carbide) thermal spray is applied on the contact surface of the connection between the arm end and the bucket. This has delivered significant reduction in wear of the contact surface and rattling.

### Adjustable Bucket Linkage



The Bucket is provided adjustment system to take up play in the linkage.

## SPECIFICATIONS

### ZX130 TYPE H14 SUPER LONG FRONT

#### ENGINE

Model ..... Isuzu CC-4BG1TC  
 Type ..... 4-cycle water-cooled, direct injection  
 Aspiration ..... Turbocharged, intercooled  
 No. of cylinders ..... 4  
 Rated power  
 ISO 9249, net ..... 65 kW (87 HP) at 2 150 min<sup>-1</sup> (rpm)  
 SAE J1349, net ..... 65 kW (87 HP) at 2 150 min<sup>-1</sup> (rpm)  
 Maximum torque ..... 340 Nm (35 kgfm) at 1 600 min<sup>-1</sup> (rpm)  
 Piston displacement .. 4.329 L  
 Bore and stroke ..... 105 mm x 125 mm  
 Batteries ..... 2 x 12 V / 55 Ah  
 Governor ..... Mechanical speed control with stepping motor

#### HYDRAULIC SYSTEM

##### Hydraulic Pumps

Main pumps ..... 2 variable displacement axial piston pumps  
 Maximum oil flow .. 2 x 105 L/min  
 Pilot pump ..... 1 gear pump  
 Maximum oil flow .. 33 L/min

##### Hydraulic Motors

Travel ..... 2 variable displacement axial piston motors  
 Swing ..... 1 axial piston motor

##### Relief Valve Settings

Implement circuit ..... 34.3 MPa (350 kgf/cm<sup>2</sup>)  
 Swing circuit ..... 27.7 MPa (282 kgf/cm<sup>2</sup>)  
 Travel circuit ..... 34.3 MPa (350 kgf/cm<sup>2</sup>)  
 Pilot circuit ..... 3.9 MPa (40 kgf/cm<sup>2</sup>)

##### Hydraulic Cylinders

	Quantity	Bore	Rod diameter
Boom	2	105 mm	70 mm
Arm	1	120 mm	90 mm
Bucket	1	85 mm	55 mm

#### BUCKET SPECIFICATIONS AND COMPATIBILITY

ZX130	Capacity ISO heaped	Width Without side cutters	Weight	Recommendation
				ZX130 H14
Backhoe	0.19 m <sup>3</sup>	490 mm	160 kg	⊙
Slope finishing	-	1 500 mm	250 kg	◇
Max. weight				500 kg

- ⊙ Suitable for materials with density of 1 800 kg/m<sup>3</sup> or less
- ◇ Slope-finishing service

#### UNDERCARRIAGE

##### Tracks

Heat-treated connecting pins with dirt seals. Hydraulic (grease) track adjusters with shock-absorbing recoil springs.

##### Numbers of Rollers and Shoes on Each Side

Upper rollers ..... 1  
 Lower rollers ..... 7  
 Track shoes ..... 44  
 Track guard ..... 1

##### Traction Device

Each track driven by 2-speed axial piston motor.  
 Parking brake is spring set/hydraulic-released disc type.  
 Automatic transmission system: High-Low.

Travel speeds ..... High : 0 to 5.5 km/h  
 Low : 0 to 3.4 km/h

Maximum traction force .. 102 kN (10 400 kgf)

Gradeability ..... 70% (35 degree) continuous

#### UPPERSTRUCTURE

##### Revolving Frame

D-section skirt for resistance to deformation.

##### Swing Device

Axial piston motor with planetary reduction gear is bathed in oil. Swing circle is single-row. Swing parking brake is spring-set/hydraulic-released disc type.

Swing speed ..... 13.7 min<sup>-1</sup> (rpm)

##### Operator's Cab

Independent roomy cab, 1 005 mm wide by 1 675 mm high, conforming to ISO\* Standards.  
 \*International Organization for Standardization

#### SERVICE REFILL CAPACITIES

Fuel tank ..... 250.0 L  
 Engine coolant ..... 19.0 L  
 Engine oil ..... 15.8 L  
 Swing device ..... 3.2 L  
 Travel device (each side) ..... 4.0 L  
 Hydraulic system ..... 130.0 L  
 Hydraulic oil tank ..... 69.0 L

#### WEIGHTS AND GROUND PRESSURE

##### ZX130 TYPE H14 SUPER LONG FRONT

Equipped with 7.93 m boom, 5.53 m arm and 0.19 m<sup>3</sup> bucket (ISO heaped), 3 360 kg counterweight.

Shoe type	Shoe width	Operating weight	Ground pressure
Triple grouser	700 mm	13 700 kg	30 kPa (0.31 kgf/cm <sup>2</sup> )

##### Basic Machine Weight and Overall Width

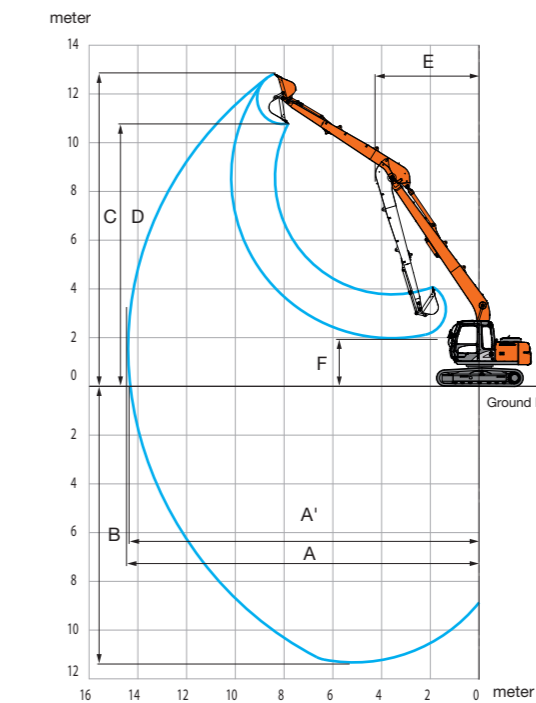
Excluding front end attachment, additional counterweight, fuel, hydraulic oil, coolant, etc. Including counterweight.

ZX130		
Shoe width	Weight	Overall width
700 mm	10 600 kg	2 690 mm

## SPECIFICATIONS

### ZX130 TYPE H14 SUPER LONG FRONT

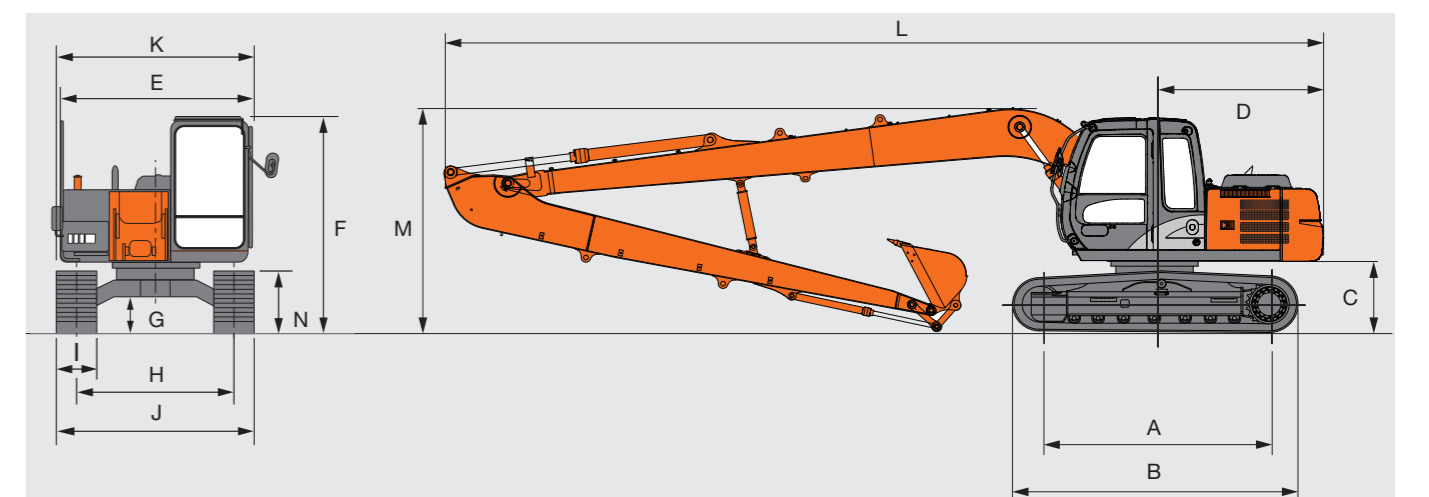
#### WORKING RANGES



	ZX130 TYPE H14
A Max. digging reach	14 270
A' Max. digging reach (on ground)	14 200
B Max. digging depth	11 330
C Max. cutting height	12 820
D Max. dumping height	10 770
E Min. swing radius	4 260
F Min. dumping height	1 980
Bucket digging force ISO	66 kN (6 750 kgf)
Bucket digging force SAE:PCSA	58 kN (5 900 kgf)
Arm crowd force ISO	31 kN (3 200 kgf)
Arm crowd force SAE:PCSA	30 kN (3 100 kgf)

\*Excluding track shoe lug

#### DIMENSIONS



	ZX130 TYPE H14
A Distance between Tumblers	2 880
B Undercarriage Length	3 580
C Counterweight Clearance	*890
D Rear-end Swing Radius	2 130
E Overall Width of Upperstructure	2 460
F Cab Height	2 740
* G Minimum Ground Clearance	*440
H Track Gauge	1 990
I Track Shoe Width	700 (Grouser shoe)
J Undercarriage Width	2 690
K Overall Width	2 690
L Overall Length	10 990
M Overall Height	2 820
N Track Height with Triple Grouser Shoes	790

\* Excluding track shoe lug