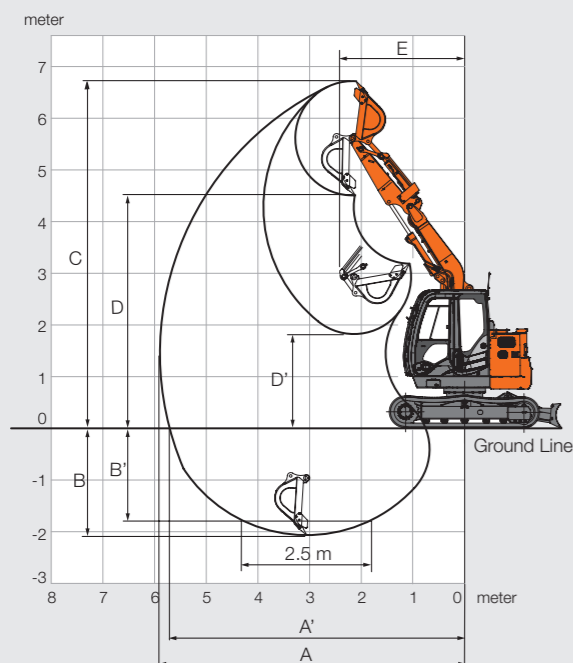


WORKING RANGES

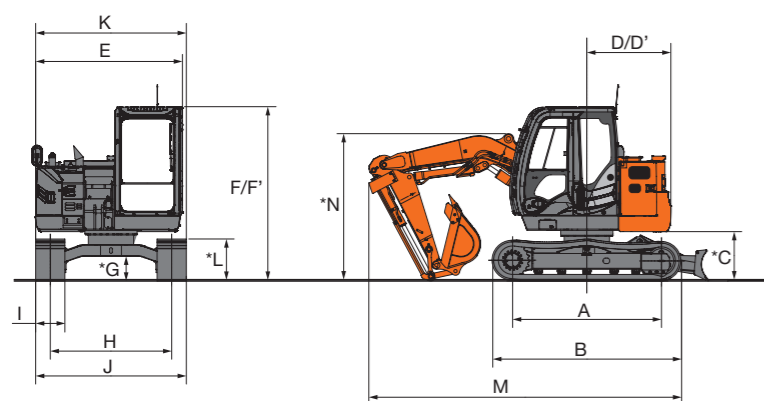


Unit : mm

	ZX75US-5A
A Max. digging reach	5 900
A' Max. digging reach (on ground)	5 710
B Max. digging depth	2 090
B' Max. digging depth (2.5 m level)	1 800
C Max. cutting height	6 700
D Max. dumping height	4 490
D' Min. dumping height	1 810
E Min. swing radius	2 420

Excluding track shoe lug

DIMENSIONS



Unit : mm

	ZX75US-5A
A Distance between tumblers	2 290
B Undercarriage length	2 920
*C Counterweight clearance	740
D Rear-end swing radius	1 290
D' Rear-end length	1 290
E Overall width of upperstructure	2 260
F Overall height of cab	2 690
F' Overall height of upperstructure	2 690
*G Min. ground clearance	360
H Track gauge	1 870
I Track shoe width	G450
J Undercarriage width	2 320
K Overall width	2 320
*L Track height with triple grouser shoes	650
M Overall length	4 820
*N Overall height of boom	2 270

* Excluding track shoe lug
G: Triple grouser shoe

Before using a machine with a satellite communication system, please make sure that the satellite communication system complies with local regulations, safety standards and legal requirements. If not so, please make modifications accordingly.

These specifications are subject to change without notice. Illustrations and photos show the standard models, and may or may not include optional equipment, accessories, and all standard equipment with some differences in color and features. Before use, read and understand the Operator's Manual for proper operation.

SHORT REACH FRONT

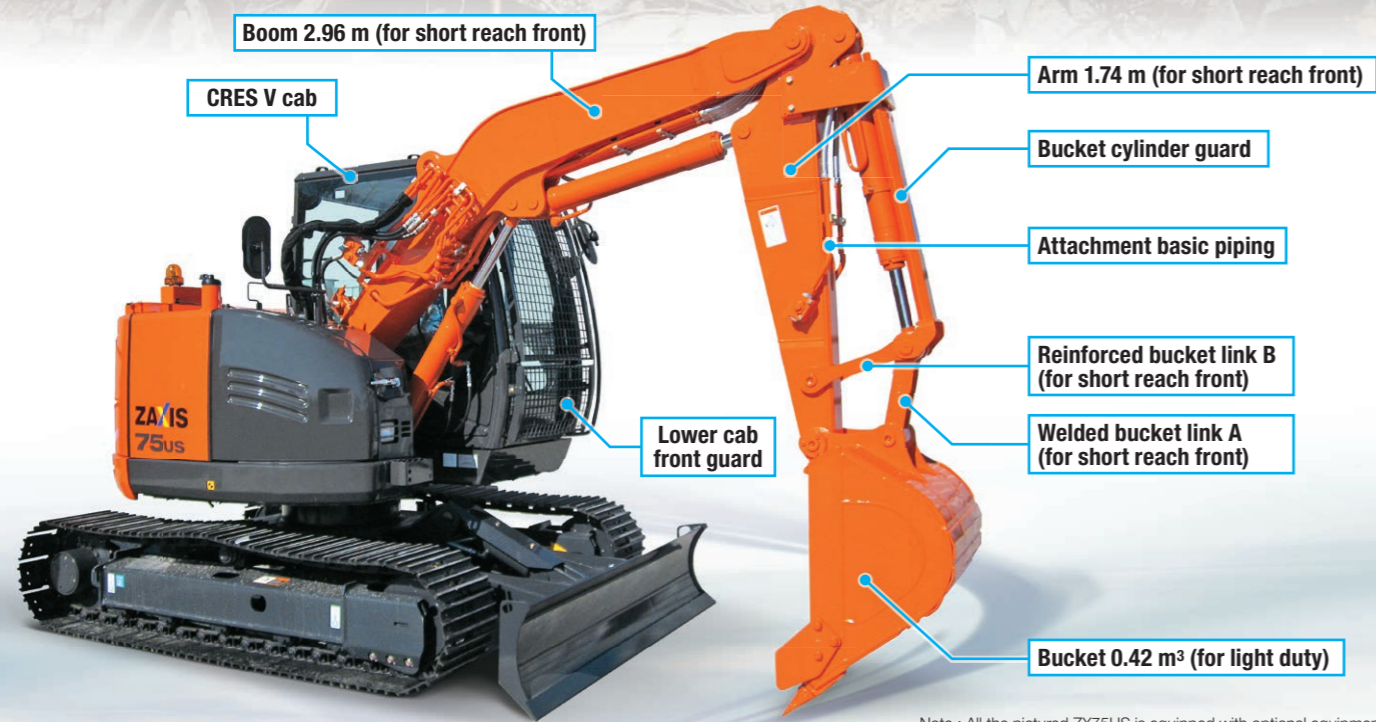
ZAXIS 75us

APPLICATION & ATTACHMENT



Model Code	ZX75US-5A
Engine Rated Power	34.1 kW (45.7 HP)
Operating Weight	8 360 kg

Exclusive-Design for Confined Jobsite Underground



Note : All the pictured ZX75US is equipped with optional equipments.

Big Bucket for Higher Production

The big 0.42 m³ bucket comes standard for productive light-duty excavation.



Improved Short-Reach Front

The arm cylinder and piping are located below the boom for reducing damage due to striking with upper obstacles.



This front is positioned for the sake of photographing. Upon leaving the cab, make sure to rest the bucket on the ground.

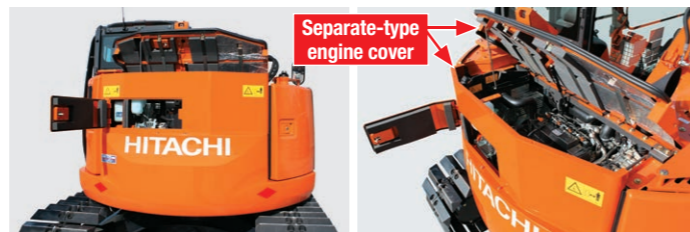
Arm with Bucket Cylinder Guard

The bucket cylinder is protected with its guard to reduce damage due to hitting with upper obstacles.



This front is positioned for the sake of photographing. Upon leaving the cab, make sure to rest the bucket on the ground.

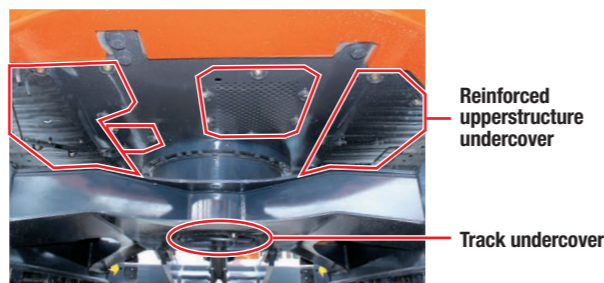
Separate-Type Engine Cover



The engine cover is retracted from the counterweight to reduce damage.

The separate-type engine cover, if damaged, is convenient to replace.

Undercovers



The upperstructure bottom provided with a reinforced upperstructure undercover. And a track frame bottom provided with an undercover. The hydraulic equipment housed inside is protected from rugged ground with rocks, etc.

SPECIFICATIONS

ENGINE

Model	4TNV94L
Type	4-cycle water-cooled, direct injection
No. of cylinders	4
Rated power	
ISO 9249, net	34.1 kW (45.7 HP) at 2 000 min ⁻¹ (rpm)
SAE J1349, net	34.1 kW (45.7 HP) at 2 000 min ⁻¹ (rpm)
Maximum torque	204.1 Nm (20.8 kgfm) at 1 000 min ⁻¹ (rpm)
Piston displacement	3.053 L
Bore and stroke	94 mm x 110 mm
Batteries	2 x 12 V / 52 Ah

HYDRAULIC SYSTEM

Hydraulic Pumps

Main pumps	3 variable displacement axial piston pumps
Maximum oil flow	2 x 72 L/min 1 x 56 L/min
Pilot pump	1 gear pump
Maximum oil flow	20 L/min

Hydraulic Motors

Travel	2 variable displacement axial piston motors
Swing	1 axial piston motor

Relief Valve Settings

Implement circuit	26.0 MPa (265 kgf/cm ²)
Swing circuit	26.5 MPa (270 kgf/cm ²)
Travel circuit	31.4 MPa (320 kgf/cm ²)
Pilot circuit	3.9 MPa (40 kgf/cm ²)

Hydraulic Cylinders

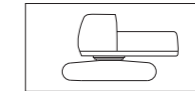
	Quantity	Bore	Rod diameter
Boom	1	115 mm	65 mm
Arm	1	110 mm	65 mm
Bucket	1	90 mm	55 mm

WEIGHTS AND GROUND PRESSURE

Equipped with Boom 2.96 m, Arm 1.74 m, 1 305 kg counterweight and attachment 1 320 kg.

Triple grouser shoe	Operating weight	Ground pressure
450 mm	8 360 kg	36 kPa (0.37 kg/cm ²)

Basic Machine Weight and Overall Width



Excluding front end attachment, fuel, hydraulic oil and coolant etc. Including counterweight.

Triple grouser shoe	Weight	Overall width
450 mm	6 790 kg	2 320 mm

Components Weight

	Weight
Counterweight	1 305 kg
Arm 1.74 m (with bucket cylinder)	390 kg
Boom 2.96 m (with arm cylinder and boom cylinder)	550 kg
Bucket 0.42 m ³	340 kg

EQUIPMENT

CAB

CRES V (Center pillar reinforced structure) cab	●
Lower cab front guard	●
Upper cab front guard	○

LIGHTS

2 working lights (boom light with cover)	●
Additional cab roof front lights	○
Rotating lamp	○

UPPER STRUCTURE

Reinforced undercovers	●
Air cleaner double filters	●
High mesh full flow filter with restriction indicator	○
Travel motion alarm device	○
Swing motion alarm device	○

FRONT ATTACHMENTS

Arm 1.74 m (for short reach front)	●
Boom 2.96 m (for short reach front)	●
Bucket cylinder guard	●
Bucket 0.42 m ³ (for light duty)	●
Bucket 0.28 m ³	○
Welded bucket link A (for short reach front)	●
Reinforced bucket link B (for short reach front)	●

UNDERCARRIAGE

Blade	○
Track undercovers	●
Track guard (each side)	○
450 mm triple grouser shoes	●
600 mm triple grouser shoes	○
600 mm triangle shoes	○

ATTACHMENTS

Accessories for 2 speed selector	○
Attachment basic piping	●
Breaker and crusher piping	●
Parts for breaker and crusher	●

● Standard equipment ○ Optional equipment

- The short-reach front is designed exclusively for light-duty excavation in soft soil and loading. For general-purpose excavation, please use a 0.28 m³ bucket.
- When the front is rolled in fully, the bucket may interfere with the cab.
- During excavation when the cylinders are extended fully, or the front attachment is in certain position, the cylinders and structures may be subjected to large forces, reducing their service life.
- When pushing the side of wall by using the bucket and swing torque, the machine itself and front are subjected to large forces, reducing their service life.